

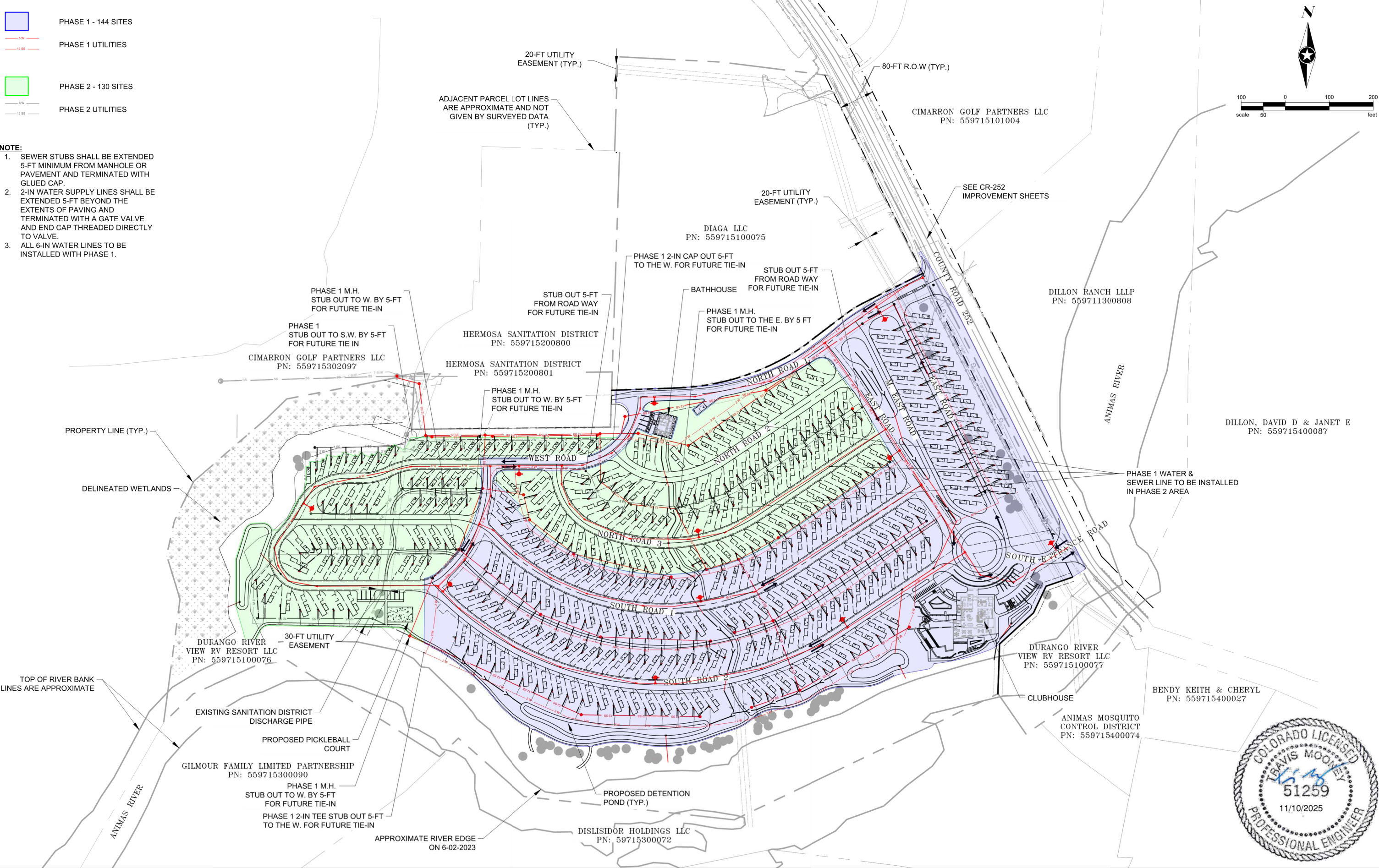
Save: 10/2/2025 2:26 PM scollins Plot: 11/6/2025 4:29 PM X:\PT\TR\ROBRE\168892\5-final-dsgm\51-drawings\10-Civil\cad\dwg\sheet_Village Camp\168892_PHASEING PLAN.dwg

- 6 W

12 SS
- PHASE 1 - 144 SITES
- PHASE 1 UTILITIES
- 6 W

12 SS
- PHASE 2 - 130 SITES
- PHASE 2 UTILITIES

- NOTE:**
- SEWER STUBS SHALL BE EXTENDED 5-FT MINIMUM FROM MANHOLE OR PAVEMENT AND TERMINATED WITH GLUED CAP.
 - 2-IN WATER SUPPLY LINES SHALL BE EXTENDED 5-FT BEYOND THE EXTENTS OF PAVING AND TERMINATED WITH A GATE VALVE AND END CAP THREADED DIRECTLY TO VALVE.
 - ALL 6-IN WATER LINES TO BE INSTALLED WITH PHASE 1.



SEH Project	168892	Rev.#	Revision Issue Description	Date	Rev.#	Revision Issue Description	Date
Drawn By	SC/CM						
Designed By	TM						
Checked By	SW						



I HEREBY CERTIFY THAT THIS PLAN WAS PREPARED BY ME OR UNDER MY DIRECT SUPERVISION AND THAT I AM A DULY LICENSED PROFESSIONAL ENGINEER UNDER THE LAWS OF THE STATE OF CO.

TRAVIS MOONEY
DATE: 11/12/2025
LICENSE NO. 0051259

VILLAGE CAMP DURANGO
DURANGO, COLORADO

PHASING PLAN

